

North Westdale News

P.O. Box 642522, Los Angeles, CA 90064

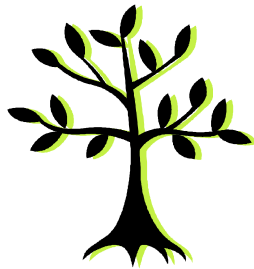
VOLUME 28, ISSUE 4

SEPTEMBER 2006

Now It's A Little Easier To Be Green Apply for a Free Parkway Tree

The City of Los Angeles' Environmental Affairs Department has a tree planting project called "Rooted in Neighborhoods" that they have invited North Westdale to participate in. The program plants FREE trees on parkways, the area between the sidewalk and the street. The number of trees available is limited. They will be distributed on a first come, first served basis.

All residents need to do is



send in a form giving permission for the tree to be planted and agreeing to water the tree until it is established. The city will assess the location and if suitable, plant the tree.

Application forms will be available at the next NWNA meeting on September 11 at St. Andrew's Lutheran Church. If you cannot make the meeting, but would like a form, please email Victoria Sanelli at bunigrrl@gmail.com with your address.

2nd Annual North Westdale

MEGA Garage Sale



Last year's neighborhood garage sale was a huge success, so we're bringing it back again this year! The North Westdale Neighborhood Association will take care of advertising the sale in the local paper and posting signs on the day of the sale. We'll also be putting together a map of all participating houses so it'll be easy for shoppers to find you.

All you need to do is get your goodies ready to sell and set up shop on:

Saturday, October 21

If you will be participating, please call Tony Sanelli at (310) 694-0228, or send an email to tsanelli@acfpartners.com, so we can include this information in our advertising.

SAVE THE DATE!

North Westdale
Neighborhood
Meeting

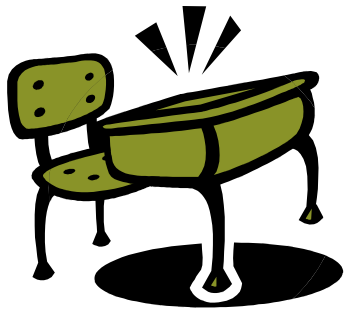
Monday,
September 11th

7:00pm

St. Andrew's
Lutheran Church
on Federal &
Clarkson

NWNA is back
from summer
break!

Get involved with
what's going on
in our
neighborhood!
Find out the
latest on schools,
airport issues,
Mar Vista
Community
Council,
neighborhood
events, crime
stats and more.



Richland Avenue Elementary School Update

Lots of exciting things are going on at Richland Avenue Elementary School! Following are some highlights:

- Richland is continuing as an Arts Prototype school.
- New playgrounds are being installed, stay tuned for a dedication announcement soon.
- Richland has added a 6th grade.
- Last year, Richland identified 15 youngsters for the gifted program. These students will be cluster in grades 3-6. Potential grade 2 students will also be clustered.
- Fundraising is going on now for a new computer lab.
- Teachers are devising a curriculum for the Reading Garden for grades 4-6.
- Preschool kindergarten classes and the STAR and Youth Services after school programs will continue.
- A Halloween Carnival and Craft Fair is planned for October 28.

Improving our local public school benefits not only families with school-age children, but our entire neighborhood in the form of higher

property values. Here are some ways you can support Richland Avenue Elementary in their efforts to provide the best education possible:

Halloween Carnival & Craft Fair

On Saturday, October 28, the school will host a Halloween Carnival and Craft Fair. Local businesses and residents are invited sponsor booths and/or donate funds. Money raised from this event will go directly toward the funding of a new computer lab and the Richland Avenue Community Reading Garden. All donations are tax deductible.

There are several other ways you can help Richland Avenue Elementary:

Grocery Club Card Registration

Register your grocery club card (Albertson's, Ralphs, Vons, Pavilions) with Richland and the school will earn money every time you shop.

Box Tops and Soup Can Labels

Clip Box Tops logos from General Mills products and cut entire labels from Campbell's Soup products. Bring them to Richland and they can be exchanged for funds to support school projects.

Schools Rule Westside Pavilion & Santa Monica Place

Bring your receipts from purchases made between 9/15/06 – 5/15/07 to Guest Services at each location and Richland will receive points toward the purchase of items for student-use.

WaMoola for Schools!

(www.wamoolaforschools.com)

Anyone who banks with Washington Mutual Bank can enroll in the WaMoola for Schools program. Designate Richland as the school you want to support and anytime you use your Washington Mutual Visa Check Card, Richland will earning points in their program.

Office Depot Back to School

Office Depot is proud to support schools through the 5% Back to School's program. Purchase qualifying student school supplies and designate Richland (School ID# 70010450) at check

out. Richland will receive credits for free supplies.

Visit the Richland Avenue Elementary School website for more information:

www.lausd.k12.ca.us/Richland_EL/

Are You Crafty?
Ply your wares at the
Halloween Carnival and
Craft Fair on October 28.

Call Kami Turrou at
310/575-0058 for more info.

*** REMINDER ***

Please be considerate of your neighbors. Walk your dog on leash and be sure to pick up after him or her. Per Los Angeles Municipal Code (LAMC) 53.06.2, dogs must be kept on your own property unless under the control of a competent person and restrained on a leash six feet or less in length. Per LAMC 53.49, owners are responsible for immediately removing any feces deposited by a dog on public or private property (other than that of the dog owner).





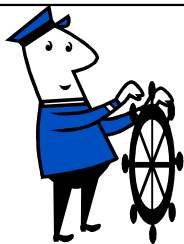
Santa Monica City Council Candidates Forum
on Santa Monica Airport Issues

Thursday, October 5, 2006

6:30 p.m. to 9:00 p.m.

Ken Edwards Center
1527 4th Street, Santa Monica

This forum will focus on Santa Monica Airport environmental, noise, safety and other quality-of-life issues. For more information, contact Martin Rubin, Director of Concerned Residents Against Airport Pollution at (310) 479-2529 or jetairpollution@earthlink.net.



**BLOCK
CAPTAINS
NEEDED!**

We need block captains for the following blocks:

- 2700 Barrington
- 2800 Barrington
- 11400 National (north side)
- 11500 National (north side)
- All blocks west of Barrington

What is a block captain? A block captain facilitates communication between NWN and residents on his/her block by passing out newsletters, attending meetings, etc.

To volunteer, please contact Tony Sanelli at (310) 694-0228 or tsanelli@acfparkers.com.

15th Annual Emergency
Preparedness Fair

Saturday, September 9
10 a.m. to 2 p.m.

Westside Pavilion
18000 W. Pico Blvd.

Learn how to prepare your home,
family and business for
emergencies. Free sample
emergency kit to first 300
households.

North Westdale Neighborhood Association

President	Tony Sanelli
1st Vice President	Bahaa Mikhail
Secretary	Amy Levy
Webmaster	Andrew Parke
Newsletter Editor	Victoria Sanelli

If you have questions or would like to volunteer and get more involved with the neighborhood association, contact Tony Sanelli at (310) 694-0228 or tsanelli@acfpartners.com.

Have a story idea or event that might be of interest to the neighborhood? Please email Victoria Sanelli at bunigr1@gmail.com.

The North Westdale Neighborhood Association (NWN) serves the community bounded by Bundy Drive, National Boulevard, Sawtelle Boulevard and the Santa Monica Freeway, representing approximately 1,000 homes. All residents, both home owners and renters, are members. There is an annual voluntary donation of \$10 per household.

NWNA strives to improve our neighborhood with activities ranging from crime watch to neighborhood beautification to local school support.

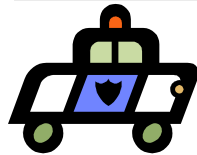
Meetings are held the second Monday of every month (except July and August) at St. Andrew's Lutheran Church on National & Federal. All neighbors are welcome to attend.

Join The North Westdale E-Mail List!

Go to:

<http://groups.yahoo.com/group/NWNA>

Click on the "Join This Group" button and follow the online instructions.



Police Report

Senior Lead Officer
Craig White
310-622-3973

Basic Car Coordinator
Sergeant Pompano
310-482-6334

Crime Trends

The following are the crime statistics representing 6/15/06 - 7/12/06:

- Aggravated Assaults 2
- Burglary (Vehicle) 19
- Robbery 2
- Burglary (Res/Biz) 9
- Grand Theft Auto 5
- Homicide 0
- Sex 0

During this rating period Burglary/Theft from Motor Vehicle (BFMV) has become a problem in

Basic Car 14A25 area.

Any vehicle can be the target of burglary/theft from motor vehicles. Carry as few valuables in your vehicle as possible. Take everything out of your glove compartment when you park your vehicle. Attempt to park in well-lit areas. Secure all doors and windows before leaving your vehicle. Never leave packages with a parking lot attendant. Join your local Neighborhood Watch Group it is still the best tool we have against crime.

Upcoming Events

Pacific Station Boosters Open House and Mixer.

Tour the station, see the jail, meet the officers and learn about Explores and DAP programs. Wednesday, Sept. 20, 5:30 p.m.-7:30 p.m. at LAPD Pacific Area Station (12312 Culver Blvd., Los Angeles). RSVP by 9/12 to Jann Brauer (310) 822-0094.

LAPD Town Hall Meeting. Featured speaker will be former CIA Agent James Biesterfeld. Monday, Sept. 25, 6:30 p.m.-8:30 p.m. at EA Sports Building (5510 Lincoln Blvd., Playa Vista).